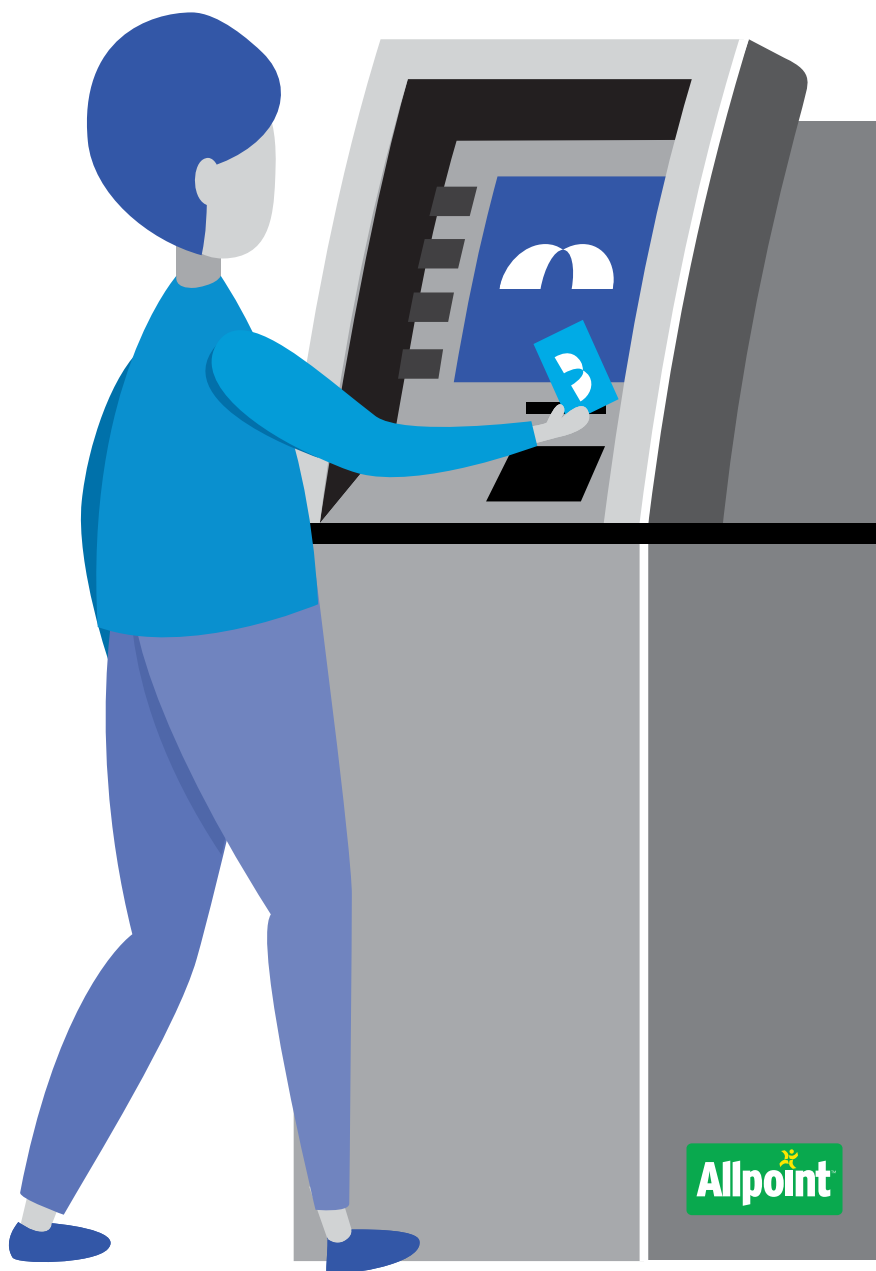


GO FOR MORE™

with surcharge-free* ATMs worldwide!



We are excited to announce our recent partnership with the **Allpoint Network!** This means you now have access to more than 55,000 surcharge-free* ATMs worldwide.

Allpoint ATMs are conveniently located in national retailers such as Target™, CVS™, Costco™ and Walgreens™, just to name a few.** With

the Allpoint Network, you will have access to your account, through surcharge-free ATMs, across the continental U.S. or internationally! Just look for the green Allpoint logo.



To find an Allpoint ATM near you, visit the Allpoint locator at www.allpointnetwork.com/locator.aspx.

Additionally, effective **September 1, 2020** we will be exiting from the Presto (Publix) ATM Network. This means that Presto (Publix) ATMs will no longer be surcharge free. BankUnited will apply a non-proprietary ATM fee of \$2.50 when you use a Publix (Presto) ATM. Publix (Presto) may also assess a usage fee. However, there is no fee for receiving "cash back" when you make a Publix purchase using your BankUnited debit card.

If you have any questions regarding the Allpoint Network, please call our Client Care Center and a representative will be able to assist you.

(877) 779-2265

Monday – Friday: 8 am – 8 pm ET

Saturday: 9 am – 2 pm ET

* BankUnited customers can now use their BankUnited ATM/Debit Card to withdraw money at any Allpoint ATM surcharge-free. Any transaction conducted at a non-proprietary ATM (outside of the Allpoint network) will be charged a service fee effective September 1, 2020. Fees charged by the owner/operator of the non-proprietary ATM may also apply.

** Not all retail locations participate in every market. Check the Allpoint locator to be sure the location is surcharge-free. Please note that some Allpoint ATMs may still display a surcharge screen during your Allpoint ATM transaction. If this happens, press "Yes" to accept the surcharge and proceed with your withdrawal. You will not be charged the surcharge. If you ever have a surcharge assessed at an Allpoint ATM, contact our Client Care Center at (877) 779-2265.